

BIO-AZAPIN[®]

Each tablet contains

Azathioprine 50 mg Tablets

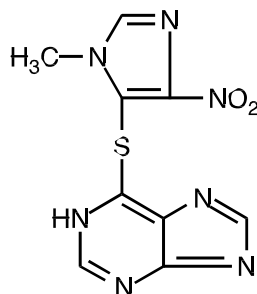
WARNING - MALIGNANCY

Chronic immunosuppression with BIOAZAPIN, a purine antimetabolite increases *risk of malignancy* in humans. Reports of malignancy include post transplant lymphoma and hepatosplenic T-cell lymphoma (HSTCL) in patients with inflammatory bowel disease. Physicians using this drug should be very familiar with this risk as well as with the mutagenic potential to both men and women and with possible hematologic toxicities. Physicians should inform patients of the risk of malignancy with BIOAZAPIN. See WARNINGS.

DESCRIPTION:

Azathioprine is an immunosuppressive antimetabolite, is available in tablet form for oral administration. Each scored tablet contains 50 mg azathioprine and the inactive ingredients.

Azathioprine is chemically 6-[(1-methyl-4-nitro-1*H*-imidazol-5-yl)thio]-1*H*-purine. The structural formula of azathioprine is:



It is an imidazolyl derivative of 6-mercaptapurine and many of its biological effects are similar to those of the parent compound.

Azathioprine is insoluble in water, but may be dissolved with addition of one molar equivalent of alkali.

Azathioprine is stable in solution at neutral or acid pH but hydrolysis to mercaptopurine occurs in excess sodium hydroxide (0.1N), especially on warming. Conversion to mercaptopurine also occurs in the presence of sulfhydryl compounds such as cysteine, glutathione, and hydrogen sulfide.

CLINICAL PHARMACOLOGY:

Azathioprine is well absorbed following oral administration. Maximum serum radioactivity occurs at 1 to 2 hours after oral S-azathioprine and decays with a half life of 5 hours. This is not an estimate of the half life of azathioprine itself, but is the decay rate for all S-containing metabolites of the drug. Because of extensive metabolism, only a fraction of the radioactivity is present as azathioprine. Usual doses produce blood levels of azathioprine, and of mercaptopurine derived from it, which are low (<1 mcg/mL). Blood levels are of little predictive value for therapy since the magnitude and duration of clinical effects correlate with thiopurine nucleotide levels in tissues rather than with plasma drug levels.

Azathioprine and mercaptopurine are moderately bound to serum proteins (30%) and are partially dialyzable. (See OVERDOSAGE)

Azathioprine is metabolized to 6-mercaptopurine (6-MP). Both compounds are rapidly eliminated from blood and are oxidized or methylated in erythrocytes and liver; no azathioprine or mercaptopurine is detectable in urine after 8 hours. Activation of 6-mercaptopurine occurs via hypoxanthine-guanine phosphoribosyltransferase (HGPRT) and a series of multi-enzymatic processes involving kinases to form 6-thioguanine nucleotides (6-TGNs) as major metabolites (See Metabolism Scheme in Figure 1). The cytotoxicity of azathioprine is due, in part, to the incorporation of 6-TGN into DNA.

6-MP undergoes two major inactivation routes (Figure 1). One is thiol methylation, which is catalyzed by the enzyme thiopurine S-methyltransferase (TPMT), to form the inactive metabolite methyl-6-MP (6-MeMP). TPMT activity is controlled by a genetic polymorphism. For Caucasians and African Americans, approximately 10% of the population inherit one non-functional TPMT allele (heterozygous) conferring intermediate TPMT activity, and 0.3% inherit two TPMT non-functional alleles (homozygous) for low or absent TPMT activity. Non-functional alleles are less common in Asians. TPMT activity correlates inversely with 6-TGN levels in erythrocytes and presumably other hematopoietic tissues, since these cells have negligible xanthine oxidase (involved in the other inactivation pathway) activities, leaving TPMT methylation as the only inactivation pathway. Patients with intermediate TPMT activity may be at increased risk of myelotoxicity if receiving conventional doses of BIOAZAPIN. Patients with low or absent TPMT activity are at an increased risk of developing severe, life threatening myelotoxicity if receiving conventional doses of BIOAZAPIN. TPMT genotyping or phenotyping (red blood cell TPMT activity) can help identify patients who are at an increased risk for developing BIOAZAPIN toxicity. Accurate phenotyping (red blood cell TPMT activity) results are not possible in patients who have received recent blood transfusions. (See WARNINGS, PRECAUTIONS: Drug Interactions, PRECAUTIONS: Laboratory Tests and ADVERSE REACTIONS sections)

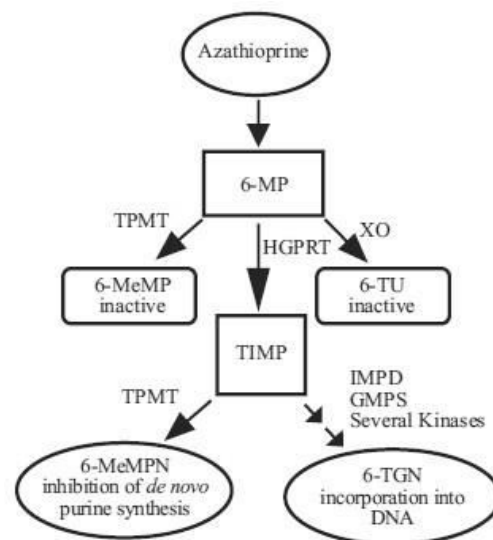


Figure:1 Metabolism pathway of azathioprine: competing pathways result in inactivation by TPMT or XO, or incorporation of cytotoxic nucleotides into DNA.

GMPS: Guanosine monophosphate synthetase; HGPRT: Hypoxanthine guanine phosphoribosyl transferase; IMPD: Inosine monophosphate dehydrogenase; MeMP: Methylmercaptapurine; MeMPN: Methylmercaptapurine nucleotide; TGN: Thioguanine nucleotides; TIMP: Thioinosine monophosphate; TPMT: Thiopurine S-methyltransferase; TU Thiouric acid; XO: Xanthine oxidase

Another inactivation pathway is oxidation, which is catalyzed by xanthine oxidase (XO) to form 6-thiouric acid. The inhibition of xanthine oxidase in patients receiving allopurinol is the basis for the azathioprine dosage reduction required in these patients (see PRECAUTIONS: Drug Interactions). Proportions of metabolites are different in individual patients, and this presumably accounts for variable magnitude and duration of drug effects.

Renal clearance is probably not important in predicting biological effectiveness or toxicities, although dose reduction is practiced in patients with poor renal function.

Homograft Survival: The use of azathioprine for inhibition of renal homograft rejection is well established, the mechanism(s) for this action are somewhat obscure. The drug suppresses hypersensitivities of the cell mediated type and causes variable alterations in antibody production. Suppression of T-cell effects, including ablation of T-cell suppression, is dependent on the temporal relationship to antigenic stimulus or engraftment. This agent has little effect on established graft rejections or secondary responses.

Alterations in specific immune responses or immunologic functions in transplant recipients are difficult to relate specifically to immunosuppression by azathioprine. These patients have subnormal responses to vaccines, low numbers of T-cells, and abnormal phagocytosis by peripheral blood cells, but their mitogenic responses, serum immunoglobulins, and secondary antibody responses are usually normal.

Immunoinflammatory Response: Azathioprine suppresses disease manifestations as well as underlying pathology in animal models of autoimmune disease. For example, the severity of adjuvant arthritis is reduced by azathioprine.

The mechanisms whereby azathioprine affects autoimmune diseases are not known. Azathioprine is immunosuppressive, delayed hypersensitivity and cellular cytotoxicity tests being suppressed to a greater degree than are antibody responses. In the rat model of adjuvant arthritis, Azathioprine has been shown to inhibit the lymph node hyperplasia, which precedes the onset of the signs of the disease. Both the immunosuppressive and therapeutic effects in animal models are dose related. Azathioprine is considered a slow acting drug and effects may persist after the drug has been discontinued.

INDICATIONS AND USAGE:

BIOAZAPIN is indicated as an adjunct for the prevention of rejection in renal homotransplantation. It is also indicated for the management of active rheumatoid arthritis to reduce signs and symptoms.

Renal Homotransplantation: BIOAZAPIN is indicated as an adjunct for the prevention of rejection in renal homotransplantation. Experience with over 16,000 transplants shows a 5-year patient survival of 35% to 55%, but this is dependent on donor, match for HLA antigens, Anti-donor or Anti-B-cell alloantigen antibody, and other variables. The effect of BIOAZAPIN on these variables has not been tested in controlled trials.

Rheumatoid Arthritis: BIOAZAPIN is indicated for the treatment of active rheumatoid arthritis

(RA) to reduce signs and symptoms. Aspirin, non-steroidal anti-inflammatory drugs and/or low dose glucocorticoids may be continued during treatment with BIOAZAPIN. The combined use of BIOAZAPIN with disease modifying anti-rheumatic drugs (DMARDs) has not been studied for either added benefit or unexpected adverse effects. The use of BIOAZAPIN with these agents cannot be recommended.

CONTRAINDICATIONS:

BIOAZAPIN should not be given to patients who have shown hypersensitivity to the drug. BIOAZAPIN should not be used for treating rheumatoid arthritis in pregnant women. Patients with rheumatoid arthritis previously treated with alkylating agents (cyclophosphamide, chlorambucil, melphalan, or others) may have a prohibitive risk of malignancy if treated with BIOAZAPIN.

WARNINGS:

Malignancy

Patients receiving immunosuppressants, including BIOAZAPIN, are at increased risk of developing lymphoma and other malignancies, particularly of the skin. Physicians should inform patients of the risk of malignancy with BIOAZAPIN. As usual for patients with increased risk for skin cancer, exposure to sunlight and ultraviolet light should be limited by wearing protective clothing and using a sunscreen with a high protection factor.

Post-transplant

Renal transplant patients are known to have an increased risk of malignancy, predominantly skin cancer and reticulum cell or lymphomatous tumors. The risk of post transplant lymphomas may be increased in patients who receive aggressive treatment with immunosuppressive drugs, including BIOAZAPIN. Therefore, immunosuppressive drug therapy should be maintained at the lowest effective levels.

Rheumatoid Arthritis

Information is available on the risk of malignancy with the use of BIOAZAPIN in rheumatoid arthritis (see ADVERSE REACTIONS). It has not been possible to define the precise risk of malignancy due to BIOAZAPIN. The data suggest the risk may be elevated in patients with rheumatoid arthritis, though lower than for renal transplant patients.

However, acute myelogenous leukemia as well as solid tumors have been reported in patients with rheumatoid arthritis who have received BIOAZAPIN.

Inflammatory Bowel Disease

Post marketing cases of hepatosplenic T-cell lymphoma (HSTCL), a rare type of T-cell lymphoma, have been reported in patients treated with BIOAZAPIN. These cases have had a very aggressive disease course and have been fatal. The majority of reported cases have occurred in patients with Crohn's disease or ulcerative colitis and the majority was in adolescent and young adult males. Some of the patients were treated with BIOAZAPIN as monotherapy and some had received concomitant treatment with a TNF α blocker at or prior to diagnosis. The safety and efficacy of BIOAZAPIN for the treatment of Crohn's disease and ulcerative colitis have not been established.

Cytopenias

Severe leukopenia, thrombocytopenia, anemias including macrocytic anemia, and/or pancytopenia may occur in patients being treated with BIOAZAPIN. Severe bone marrow suppression may also occur. Patients with intermediate thiopurine S-methyl transferase (TPMT) activity may be at an increased risk of myelotoxicity if receiving conventional doses of BIOAZAPIN. Patients with low or absent TPMT activity are at an increased risk of developing severe, life threatening myelotoxicity if receiving conventional doses of BIOAZAPIN. TPMT genotyping or phenotyping can help identify patients who are at an increased risk for developing BIOAZAPIN toxicity. (See PRECAUTIONS: Laboratory Tests) Hematologic toxicities are dose related and may be more severe in renal transplant patients whose homograft is undergoing rejection. It is suggested that patients on BIOAZAPIN have complete blood counts, including platelet counts, weekly during the first month, twice monthly for the second and third months of treatment, then monthly or more frequently if dosage alterations or other therapy changes are necessary. Delayed hematologic suppression may occur. Prompt reduction in dosage or temporary withdrawal of the drug may be necessary if there is a rapid fall in or persistently low leukocyte count, or other evidence of bone marrow depression. Leukopenia does not correlate with therapeutic effect; therefore the dose should not be increased intentionally to lower the white blood cell count.

Serious infections

Serious infections are a constant hazard for patients receiving chronic immunosuppression, especially for homograft recipients. Fungal, viral, bacterial, and protozoal infections may be fatal and should be treated vigorously. Reduction of azathioprine dosage and/or use of other drugs should be considered.

Effect on Sperm in Animals

BIOAZAPIN has been reported to cause temporary depression in spermatogenesis and reduction in sperm viability and sperm count in mice at doses 10 times the human therapeutic dose; a reduced percentage of fertile matings occurred when animals received 5 mg/kg.

PREGNANCY: Pregnancy Category D.

BIOAZAPIN can cause fetal harm when administered to a pregnant woman. BIOAZAPIN should not be given during pregnancy without careful weighing of risk versus benefit. Whenever possible, use of BIOAZAPIN in pregnant patients should be avoided. This drug should not be used for treating rheumatoid arthritis in pregnant women.

BIOAZAPIN is teratogenic in rabbits and mice when given in doses equivalent to the human dose (5 mg/kg daily). Abnormalities included skeletal malformations and visceral anomalies.

Limited immunologic and other abnormalities have occurred in a few infants born of renal allograft recipients on BIOAZAPIN. Benefit versus risk must be weighed carefully before use of BIOAZAPIN in patients of reproductive potential.

There are no adequate and well controlled studies in pregnant women. If this drug is used during pregnancy or if the patient becomes pregnant while taking this drug, the patient should be apprised of the potential hazard to the fetus. Women of childbearing age should be advised to avoid becoming pregnant.

PRECAUTIONS:

General: A gastrointestinal hypersensitivity reaction characterized by severe nausea and vomiting

has been reported. These symptoms may also be accompanied by diarrhea, rash, fever, malaise, myalgias, elevations in liver enzymes, and occasionally, hypotension. Symptoms of gastrointestinal toxicity most often develop within the first several weeks of therapy with BIOAZAPIN and are reversible upon discontinuation of the drug. The reaction can recur within hours after re-challenge with a single dose of BIOAZAPIN.

Information for Patients: Patients being started on BIOAZAPIN should be informed of the necessity of periodic blood counts while they are receiving the drug and should be encouraged to report any unusual bleeding or bruising to their physician. They should be informed of the danger of infection while receiving BIOAZAPIN and asked to report signs and symptoms of infection to their physician. Careful dosage instructions should be given to the patient, especially when BIOAZAPIN is being administered in the presence of impaired renal function or concomitantly with allopurinol (see Drug Interactions subsection and DOSAGE & ADMINISTRATION). Patients should be advised of the potential risks of the use of BIOAZAPIN during pregnancy and during the nursing period. The increased risk of malignancy following therapy with BIOAZAPIN should be explained to the patient.

Laboratory Tests: Complete Blood Count (CBC) Monitoring: Patients on BIOAZAPIN should have complete blood counts, including platelet counts, weekly during the first month, twice monthly for the second and third months of treatment, then monthly or more frequently if dosage alterations or other therapy changes are necessary.

TPMT Testing: It is recommended that consideration be given to either genotype or phenotype patients for TPMT. Phenotyping and genotyping methods are commercially available. The most common non-functional alleles associated with reduced levels of TPMT activity are *TPMT*2*, *TPMT*3A* and *TPMT*3C*. Patients with two non-functional alleles (homozygous) have low or absent TPMT activity and those with one non-functional allele (heterozygous) have intermediate activity. Accurate phenotyping (red blood cell TPMT activity) results are not possible in patients who have received recent blood transfusions. TPMT testing may also be considered in patients with abnormal CBC results that do not respond to dose reduction. Early drug discontinuation in these patients is advisable. **TPMT TESTING CANNOT SUBSTITUTE FOR COMPLETE BLOOD COUNT (CBC) MONITORING IN PATIENTS RECEIVING BIOAZAPIN.** (See CLINICAL PHARMACOLOGY, WARNINGS, ADVERSE REACTIONS and DOSAGE AND ADMINISTRATION sections)

DRUG INTERACTIONS:

Use with Allopurinol: One of the pathways for inactivation of azathioprine is inhibited by allopurinol. Patients receiving BIOAZAPIN and allopurinol concomitantly should have a dose reduction of BIOAZAPIN, to approximately 1/3 to 1/4 the usual dose. It is recommended that a further dose reduction or alternative therapies be considered for patients with low or absent TPMT activity receiving BIOAZAPIN and allopurinol because both TPMT and XO inactivation pathways are affected.

Use with Aminosalicylates: There is in vitro evidence that aminosalicylate derivatives (e.g., sulphasalazine, mesalazine, or olsalazine) inhibit the TPMT enzyme. Concomitant use of these agents with BIOAZAPIN should be done with caution.

Use with Other Agents Affecting Myelopoiesis: Drugs which may affect leukocyte production, including co- trimoxazole, may lead to exaggerated leukopenia, especially in renal transplant recipients.

Use with Angiotensin-Converting Enzyme Inhibitors: The use of angiotensin-converting enzyme inhibitors to control hypertension in patients on azathioprine has been reported to induce anemia and severe leukopenia.

Use with Warfarin: BIOAZAPIN may inhibit the anticoagulant effect of warfarin.

Use with ribavirin: The use of ribavirin for hepatitis C in patients receiving azathioprine has been reported to induce severe pancytopenia and may increase the risk of azathioprine-related myelotoxicity. Inosine monophosphate dehydrogenase (IMDH) is required for one of the metabolic pathways of azathioprine. Ribavirin is known to inhibit IMDH, thereby leading to accumulation of an azathioprine metabolite, 6-methylthioinosine monophosphate (6- MTTP), which is associated with myelotoxicity (neutropenia, thrombocytopenia, and anemia). Patients receiving azathioprine with ribavirin should have complete blood counts, including platelet counts, monitored weekly for the first month, twice monthly for the second and third months of treatment, then monthly or more frequently if dosage or other therapy changes are necessary.

Carcinogenesis, Mutagenesis, Impairment of Fertility: See WARNINGS section.

Nursing Mothers: The use of BIOAZAPIN in nursing mothers is not recommended. Azathioprine or its metabolites are transferred at low levels, both transplacentally and in breast milk. Because of the potential for tumorigenicity shown for azathioprine, a decision should be made whether to discontinue nursing or discontinue the drug, taking into account the importance of the drug to the mother.

Pediatric Use: Safety and efficacy of azathioprine in pediatric patients have not been established.

ADVERSE REACTIONS:

The principal and potentially serious toxic effects of BIOAZAPIN are hematologic and gastrointestinal. The risks of secondary infection and malignancy are also significant (see WARNINGS). The frequency and severity of adverse reactions depend on the dose and duration of BIOAZAPIN as well as on the patient's underlying disease or concomitant therapies. The incidence of hematologic toxicities and neoplasia encountered in groups of renal homograft recipients is significantly higher than that in studies employing BIOAZAPIN for rheumatoid arthritis. The relative incidences in clinical studies are summarized below:

Toxicity	Rena	Rheumatoid Arthritis
Leukopenia (any)	>50%	28%
<2500	16%	5.3%
Infections	20%	<1%
Neoplasia		*
Lymphoma	0.5%	
Others	2.8%	

*Data on the rate and risk of neoplasia among persons with rheumatoid arthritis treated with

azathioprine are limited. The incidence of lymphoproliferative disease in patients with RA appears to be significantly higher than that in the general population. In one completed study, the rate of lymphoproliferative disease in RA patients receiving higher than recommended doses of azathioprine (5 mg/kg per day) was 1.8 cases per 1000 patient years of follow-up, compared with 0.8 cases per 1000 patient years of follow-up in those not receiving azathioprine. However, the proportion of the increased risk attributable to the azathioprine dosage or to other therapies (i.e., alkylating agents) received by patients treated with azathioprine cannot be determined.

Hematologic: Leukopenia and/or thrombocytopenia are dose dependent and may occur late in the course of therapy with BIOAZAPIN. Dose reduction or temporary withdrawal may result in reversal of these toxicities. Infection may occur as a secondary manifestation of bone marrow suppression or leukopenia, but the incidence of infection in renal homotransplantation is 30 to 60 times that in rheumatoid arthritis. Anemias, including macrocytic anemia, and/or bleeding have been reported.

TPMT genotyping or phenotyping can help identify patients with low or absent TPMT activity (homozygous for non-functional alleles) who are at increased risk for severe, life threatening myelosuppression from BIOAZAPIN (See CLINICAL PHARMACOLOGY, WARNINGS and PRECAUTIONS: Laboratory Tests). Death associated with pancytopenia has been reported in patients with absent TPMT activity receiving azathioprine.

Gastrointestinal: Nausea and vomiting may occur within the first few months of therapy with BIOAZAPIN, and occurred in approximately 12% of 676 rheumatoid arthritis patients. The frequency of gastric disturbance often can be reduced by administration of the drug in divided doses and/or after meals. However, in some patients, nausea and vomiting may be severe and may be accompanied by symptoms such as diarrhea, fever, malaise, and myalgias (see PRECAUTIONS). Vomiting with abdominal pain may occur rarely with a hypersensitivity pancreatitis.

Hepatotoxicity manifest by elevation of serum alkaline phosphatase, bilirubin, and/or serum transaminases is known to occur following azathioprine use, primarily in allograft recipients. Hepatotoxicity has been uncommon (less than 1%) in rheumatoid arthritis patients. Hepatotoxicity following transplantation most often occurs within 6 months of transplantation and is generally reversible after interruption of BIOAZAPIN. A rare, but life threatening hepatic veno-occlusive disease associated with chronic administration of azathioprine has been described in transplant patients and in one patient receiving BIOAZAPIN for panuveitis. Periodic measurement of serum transaminases, alkaline phosphatase, and bilirubin is indicated for early detection of hepatotoxicity. If hepatic veno-occlusive disease is clinically suspected, BIOAZAPIN should be permanently withdrawn.

Others: Additional side effects of low frequency have been reported. These include skin rashes, alopecia, fever, arthralgias, diarrhea, steatorrhea, negative nitrogen balance, reversible interstitial pneumonitis, hepatosplenic T-cell lymphoma (see Warnings – Malignancy), and Sweet's Syndrome (acute febrile neutrophilic dermatosis).

OVERDOSAGE:

The oral LD50s for single doses of BIOAZAPIN in mice and rats are 2500 mg/kg and 400 mg/kg, respectively. Very large doses of this antimetabolite may lead to marrow hypoplasia, bleeding, infection, and death. About 30% of BIOAZAPIN is bound to serum proteins, but

approximately 45% is removed during an 8-hour hemodialysis. A single case has been reported of a renal transplant patient who ingested a single dose of 7500 mg BIOAZAPIN. The immediate toxic reactions were nausea, vomiting, and diarrhea, followed by mild leukopenia and mild abnormalities in liver function. The white blood cell count, SGOT, and bilirubin returned to normal 6 days after the overdose.

DOSAGE AND ADMINISTRATION:

TPMT TESTING CANNOT SUBSTITUTE FOR COMPLETE BLOOD COUNT (CBC) MONITORING IN PATIENTS RECEIVING BIOAZAPIN. TPMT genotyping or phenotyping can be used to identify patients with absent or reduced TPMT activity. Patients with low or absent TPMT activity are at an increased risk of developing severe, life threatening myelotoxicity from BIOAZAPIN if conventional doses are given. Physicians may consider alternative therapies for patients who have low or absent TPMT activity (homozygous for non-functional alleles). BIOAZAPIN should be administered with caution to patients having one non-functional allele (heterozygous) who are at risk for reduced TPMT activity that may lead to toxicity if conventional doses are given. Dosage reduction is recommended in patients with reduced TPMT activity. Early drug discontinuation may be considered in patients with abnormal CBC results that do not respond to dose reduction.

Renal Homotransplantation: The dose of BIOAZAPIN required to prevent rejection and minimize toxicity will vary with individual patients; this necessitates careful management. The initial dose is usually 3 to 5 mg/kg daily, beginning at the time of transplant. BIOAZAPIN is usually given as a single daily dose on the day of, and in a minority of cases 1 to 3 days before, transplantation. Dose reduction to maintenance levels of 1 to 3 mg/kg daily is usually possible. The dose of BIOAZAPIN should not be increased to toxic levels because of threatened rejection. Discontinuation may be necessary for severe hematologic or other toxicity, even if rejection of the homograft may be a consequence of drug withdrawal.

Rheumatoid Arthritis: BIOAZAPIN is usually given on a daily basis. The initial dose should be approximately 1.0 mg/kg (50 to 100 mg) given as a single dose or on a twice daily schedule. The dose may be increased, beginning at 6 to 8 weeks and thereafter by steps at 4-week intervals, if there are no serious toxicities and if initial response is unsatisfactory. Dose increments should be 0.5 mg/kg daily, up to a maximum dose of 2.5 mg/kg per day. Therapeutic response occurs after several weeks of treatment, usually 6 to 8; an adequate trial should be a minimum of 12 weeks. Patients not improved after 12 weeks can be considered refractory. BIOAZAPIN may be continued long-term in patients with clinical response, but patients should be monitored carefully, and gradual dosage reduction should be attempted to reduce risk of toxicities.

Maintenance therapy should be at the lowest effective dose, and the dose given can be lowered decrementally with changes of 0.5 mg/kg or approximately 25 mg daily every 4 weeks while other therapy is kept constant. The optimum duration of maintenance BIOAZAPIN has not been determined. BIOAZAPIN can be discontinued abruptly, but delayed effects are possible.

Use in Renal Dysfunction: Relatively oliguric patients, especially those with tubular necrosis in the immediate post cadaveric transplant period, may have delayed clearance of BIOAZAPIN or its metabolites, may be particularly sensitive to this drug, and are usually given lower doses.

Procedures for proper handling and disposal of this immunosuppressive antimetabolite drug should be considered. Several guidelines on this subject have been published. There is no general agreement that all of the procedures recommended in the guidelines are necessary or appropriate.

STORAGE CONDITION: Store at 15° to 25°C (59° to 77°F) in a dry place and protect from light.

PRESENTATION- Azathioprine 50 mg Tablets

PACKING- 1*10 TAB

* Public Interest



BIOS LAB PVT. LTD.

B/8, MILAN COMPLEX, SARKHEJ,
AHMEDABAD-382210 (Guj.)